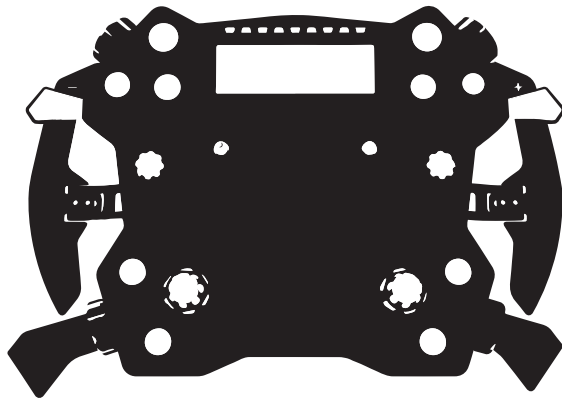


H.AO



Product Disclaimer	1
Packing List	5
01. Interface	7
02. Installation of Components	9
03. Quick Adjustment	19
04. Starting with CONSPIT LINK	22

Table of Contents

*Please note the serial number on your product before contacting the support. The serial number can be found on the warranty card and the side of the corrugated box, and written here for your convenience.



- Please read the manual carefully before you use the steering wheel.
- Any **modifications, tampering, changes or unauthorized uses** of the product will void the warranty.
- The steering wheel has no waterproof feature, please keep it away from water, rain, moisture and other items containing liquid.
- Disconnect the USB cable if you will not use the product for a long time.

Product Disclaimer

We hereby reminds you that:

Before using this product, please ensure that you have carefully read and fully understood this Product Disclaimer and all the following product safety tips and operation specifications. To the extent permitted by the laws of the People's Republic of China, Ensu (Shanghai) Electronic Technology Co., Ltd. is not responsible for all personal injury and/or property damage caused by your failure to obey any of the following safety tips or operating specifications.

If you have any questions about this Disclaimer or the following product safety tips and operating specifications, you can consult through support@conspit.com.cn. In the process of reading this Disclaimer and the following product safety tips and operating specifications, you should immediately stop using this product if you do not agree with any of the contents.

If you do use this product, your behavior will be regarded as an acceptance of this Disclaimer and the following product safety tips and operation specifications.

- **Safety information during handling and installation:**
 - The product is made of metal and carbon fibre, and has certain sharp edges. There is a possibility of collision injuries during the installation of parts. Please do not wear slippers, shorts, or clothing that exposes a lot of skin during installation and use.
 - When picking up and moving items, please make sure you have a firm grip. Dropping components can cause property damage or even personal injury.
- **It is essential to use this product under safe conditions:**
 - Please ensure that the user has the ability to move independently and is conscious. Do not use this product when sick, fatigued, or under the influence of alcohol/drugs.
- **Ensure proper installation of the product:**
 - This product requires you to complete some installation work. Please follow the steps and instructions in the product manual during the installation process. Using the product without proper installation may result in the following: partial fasteners coming loose and causing collision injuries, parts detaching and causing injury to yourself or others.
- **Safety information for product placement:**
 - Do not pile up debris within a 50-centimeter radius around the product. Leave enough space around the product for comfortable use and movement.

- **Safety information during play:**
 - Do not carry sharp objects (such as keys, screwdrivers, utility knives, etc.) during activities. Otherwise, serious personal injuries may occur.
 - Avoid others entering the user's operating area.
 - Avoid using excessive force. This product has been designed and manufactured with large structural strength and safety margins to prevent component detachment/failure. However, improper application of force beyond normal usage may still cause component damage, leading to potential safety risks.
- **Situations that may pose hazards during normal use include, but are not limited to:**
 - Other people or pets coming close to the user's operating area.
 - Other electrical cables near the working area of pedals, steering wheels, and other moving parts.
 - Exposed skin on knees, arms, feet, legs, and other body parts due to inadequate clothing coverage.
- **Follow all safety tips and operating procedures:**
 - Avoid using the product for an extended period - prolonged continuous use may cause fatigue, muscle pain, or other negative effects. We recommend a maximum single-use time of 2 hours, and the daily maximum recommended usage time should not exceed 6 hours.
 - Prohibit independent use by children under 12 years old, this product is not designed for use by children. Children should use this product under the supervision of their guardian.
- **Malfunctioning and damaged products:**
 - If the product is damaged or cannot be used properly, please stop using it immediately and consult CONSPIT's after-sales customer service. Continuing to use it may cause further damage to the product.
 - Do not attempt to repair the product or its accessories by yourself.
- **General preventive measures:**
 - Please store and protect the product and its accessories properly.
 - Do not immerse the product in liquid.
 - Do not use the product in any environment with flammable substances.
 - Using the product in dusty or dirty locations may cause damage.
 - Do not drop the product (or its components) or subject it to physical impact.

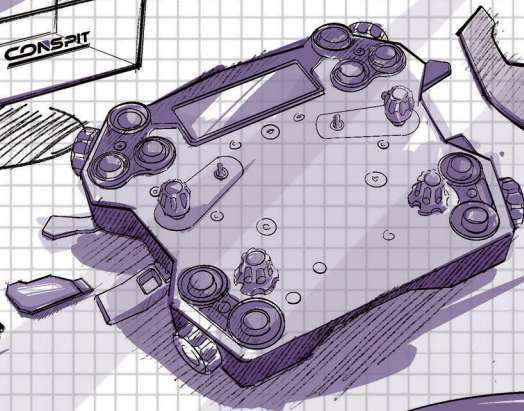
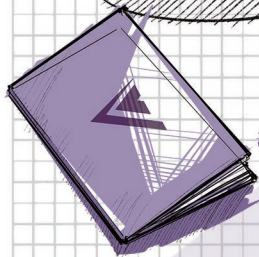
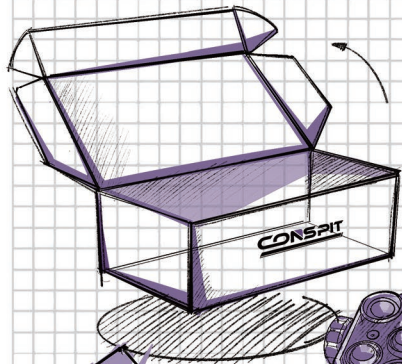
H.AO steering wheel hub removes the barriers of a steering wheel limited to a single usage scenario, introduces new features with traditional breakthrough.



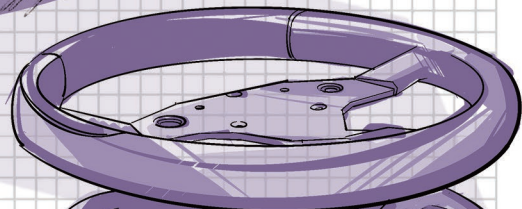
Please confirm all the components listed in the packing list before starting the installation.

The installation process is expected to take 10-20 minutes.

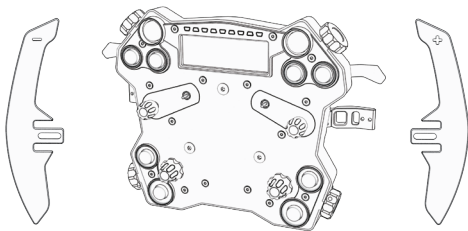
CONSPIT



SKETCH



Packing List



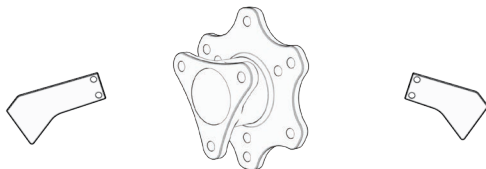
paddle shifter (down)

Hub

paddle shifter (up)



stickers



clutch paddle (long)

50mm to 70mm
hub adapter

clutch paddle (short)



USB spring cable

Packing List



M6*0.75mm
nuts (2 pieces)



M5 nuts
(6 pieces)



3.0mm hex wrench
2.0mm hex wrench
1.5mm hex wrench



multi-function tool



M3*6mm
(8 pieces)



M5*16mm
(6 pieces)

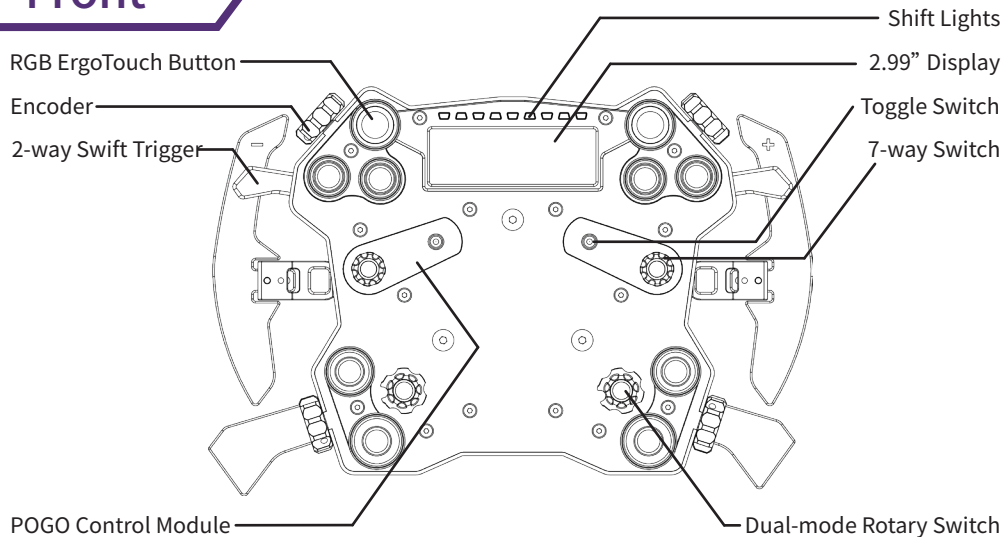


M5*16mm
(3 pieces)



M5*14mm
(9 pieces)

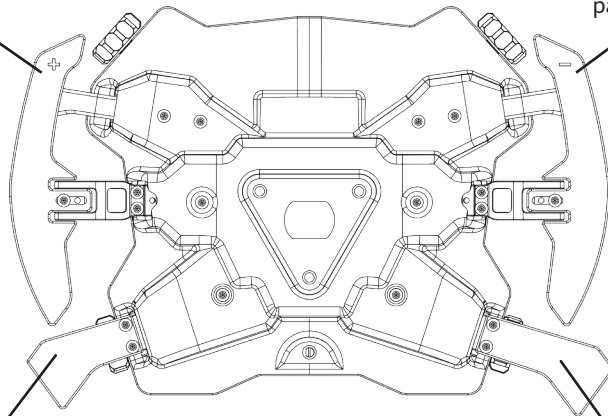
Front



Rear

Paddle shifter (up)

paddle shifter (down)



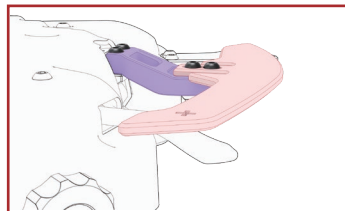
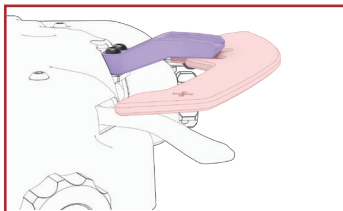
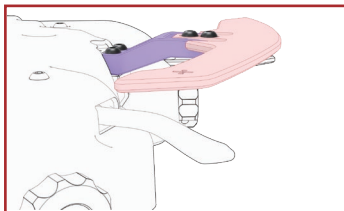
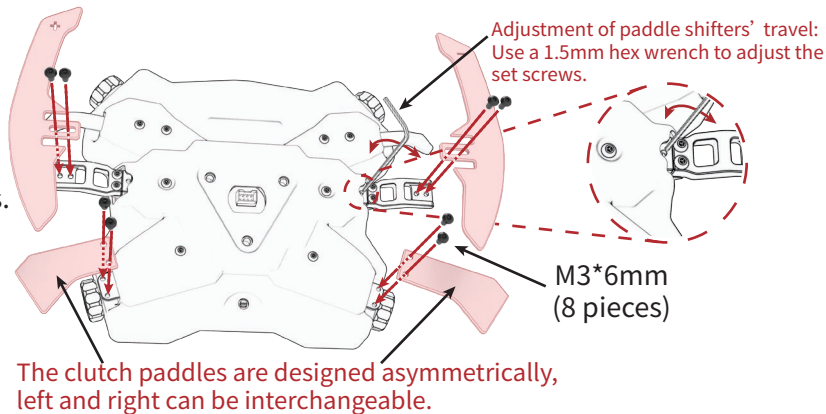
Clutch paddle (short)

Clutch paddle (long)

02 Installation of Components

1

Install the paddle shifters.

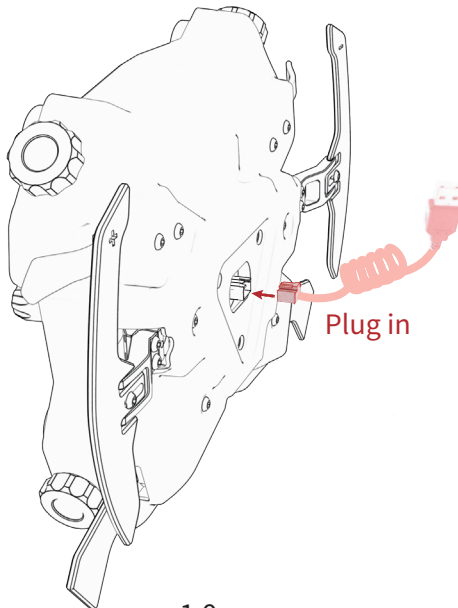


2-A

Install the quick release without threaded holes on the mounting surface.

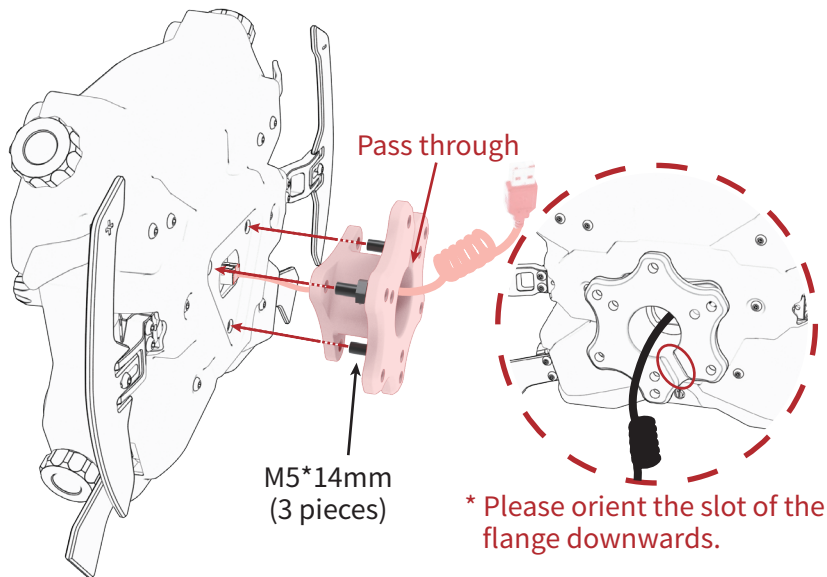
(1)

Plug in the USB
spring cable.



(2)

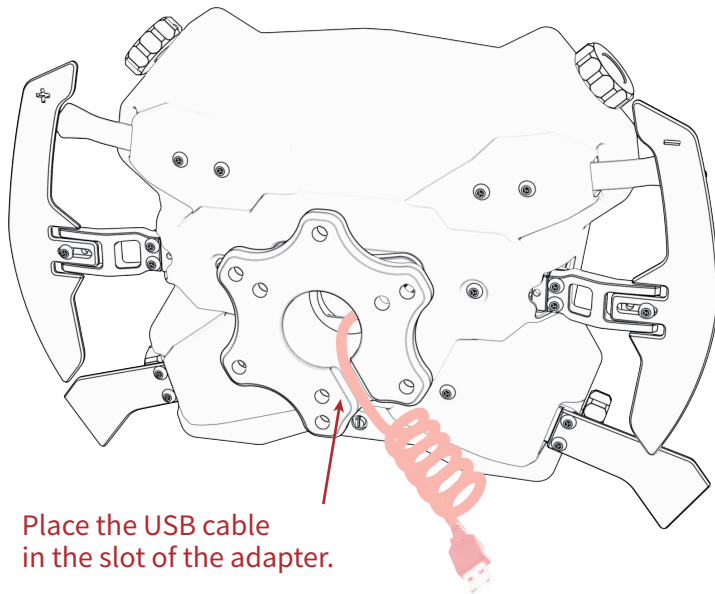
Install the adapter.



(3)

Place the USB spring cable properly.

* Please uninstall the adapter first while unplugging the USB cable.

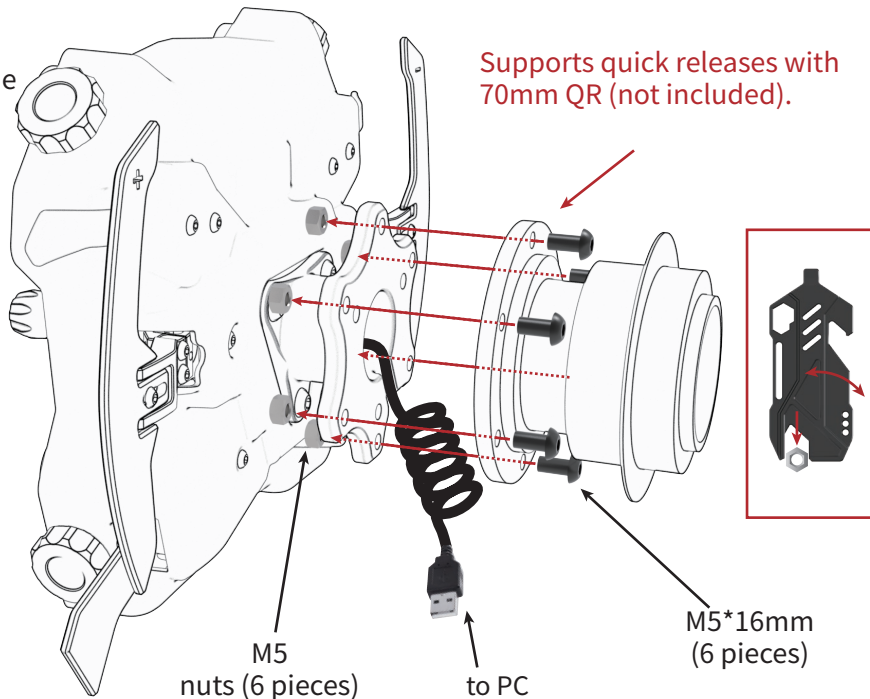


Place the USB cable
in the slot of the adapter.

(4)

Install the
quick
release.

Supports quick releases with
70mm QR (not included).

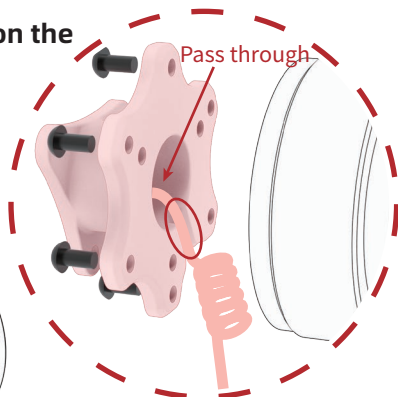
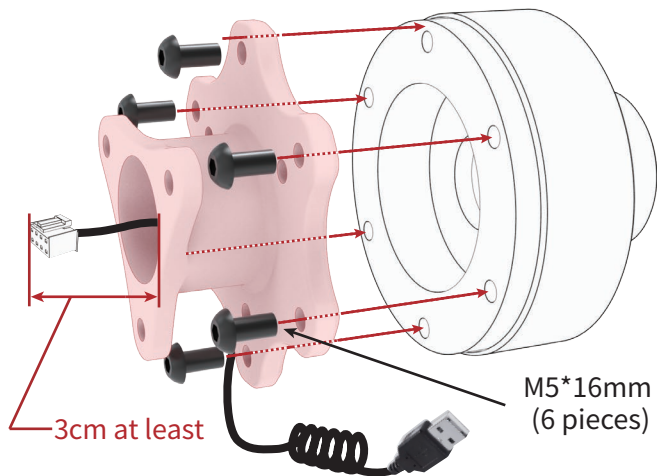


2-B

Install the quick release with threaded holes on the mounting surface.

(1)

Install the adapter flange to the quick release.

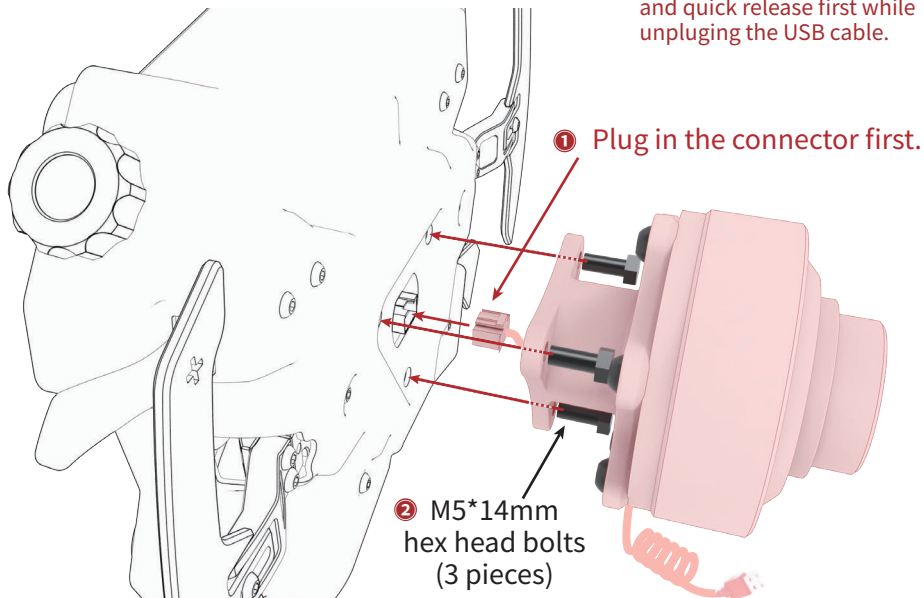


* Please orient the slot of the adapter downwards.

(2)

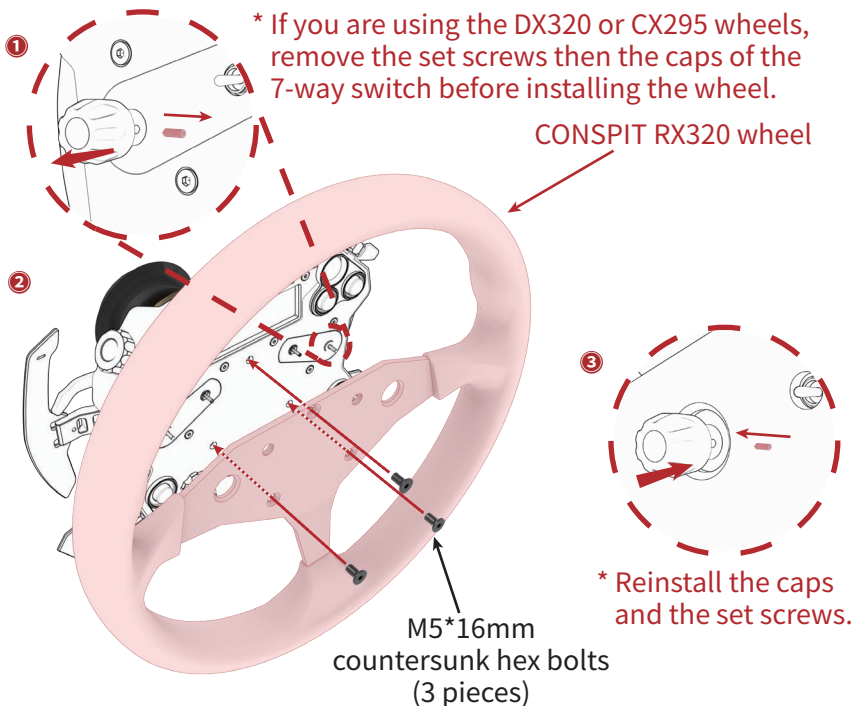
Install the quick release with adapter to the H.AO.

* Please uninstall the adapter and quick release first while unplugging the USB cable.



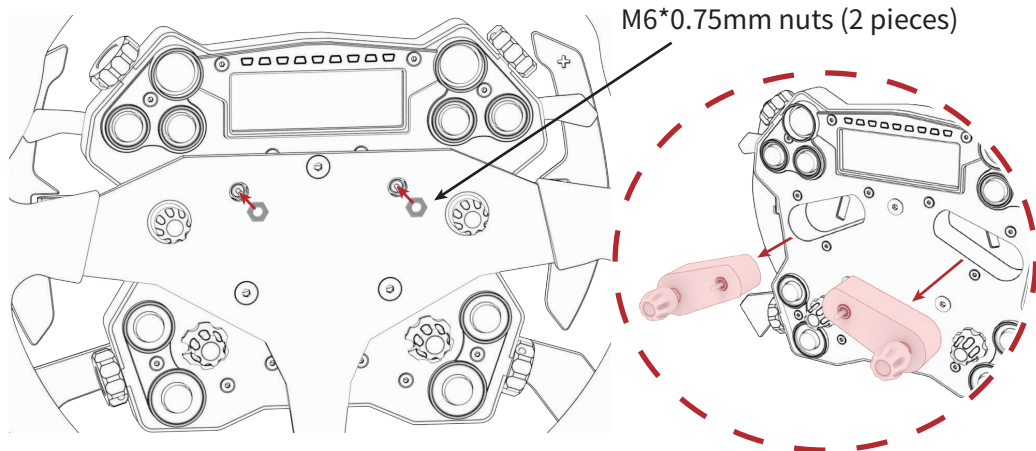
3

Install the wheel.



4

Fix the POGO Control Module .



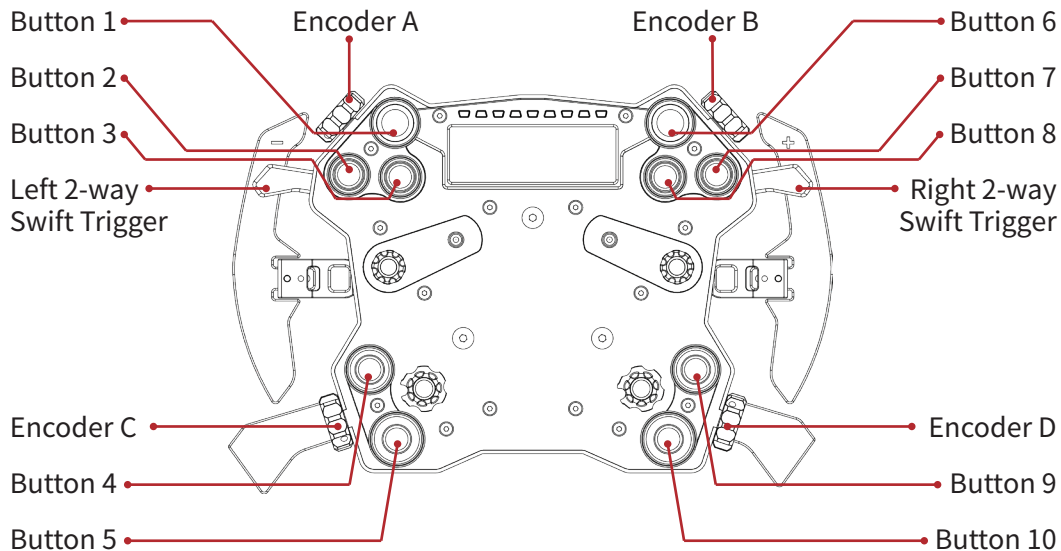
* If you are using a wheel from another manufacturer, you need to unplug the POGO Control Module.

5

Optional CONSPIT wheels
(need to be purchased separately)



03 Quick Adjustment



- **Switch the Style of Display:**

Rotate [Encoder D] to switch the style of display.

- **Enter the Light & Display Setting Mode:**

Pull and hold [Right & Left 2-way Swift Triggers] until all the shift lights turn white to enter setting mode. The shift lights will then light up in green.

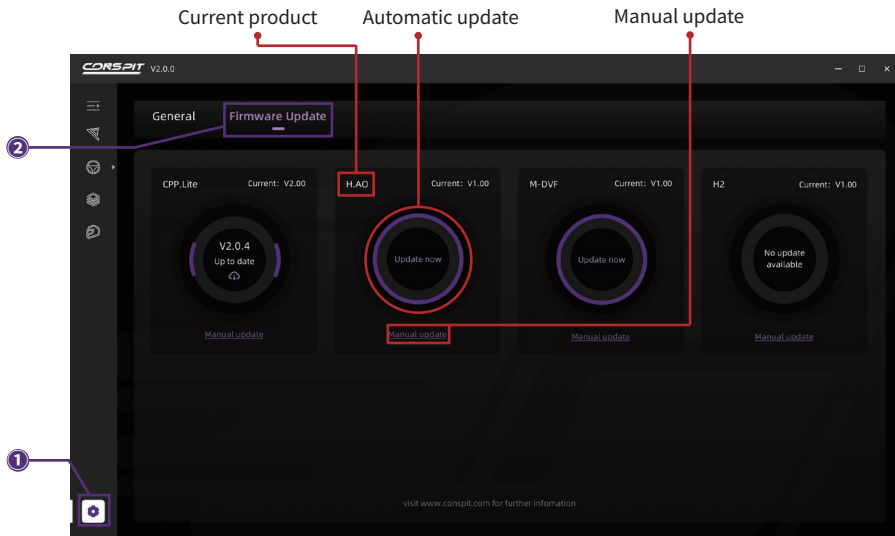
Push and hold [Right & Left 2-way Swift Triggers] until only one shift light is on to exit setting mode.

- Please scan the QR code for specific settings and options in the web.



04 Starting with CONSPIT LINK

- (1) Visit www.conspit.com and download CONSPIT LINK.
- (2) Update the firmware to the latest version.



(3) Steering wheel customizing

The screenshot shows the CONSPIT V2.0.0 software interface for steering wheel customization. The interface is divided into several sections:

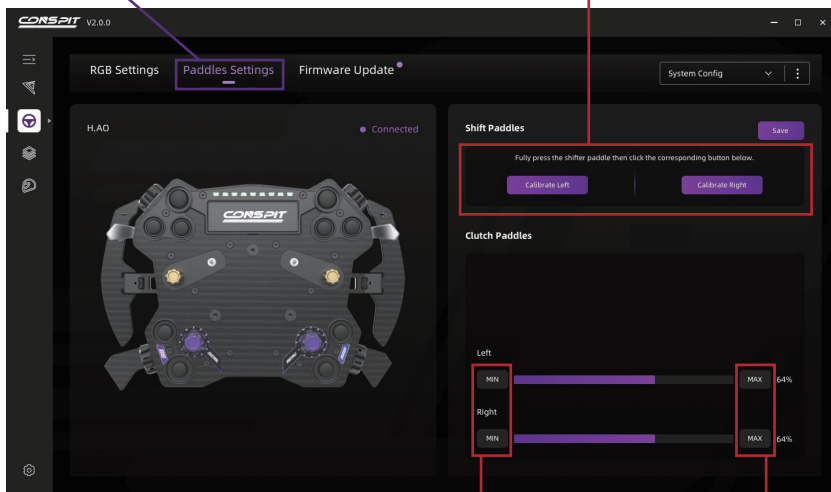
- Left Sidebar:** Contains navigation icons. A red box highlights the 'H.A.O' (Hardware Abstraction Object) icon, which is also pointed to by a red line from the 'Device connection status' label.
- Top Bar:** Includes 'RGB Settings', 'Paddles Settings', and 'Firmware Update'. A red box highlights the 'System Config' dropdown menu, pointed to by a red line from the 'Save/read configurations' label.
- Center:** Displays a 3D model of the steering wheel. Below it, a red box highlights the 'Button Lights' section with options 'Default', 'White', and 'Off', pointed to by a red line from the 'Button lights style options' label.
- Right Panel:** Contains 'Indicators Settings' and 'Shift Lights' sections. A red box highlights the 'Save' button in the 'Indicators Settings' section, pointed to by a red line from the 'After setting, write configuration to H.A.O' label. Another red box highlights the 'Flash Interval' dropdown menu in the 'Indicators Settings' section, pointed to by a red line from the 'Function indicators adjustment' label. The 'Shift Lights' section shows a series of vertical sliders for different RPM ranges (1000 to 5500), with a red box highlighting the entire section, pointed to by a red line from the 'Shift lights adjustment' label.

Annotations and labels:

- 1, 2, 3: Red circles with numbers pointing to the left sidebar icons.
- Device connection status: Red line pointing to the 'H.A.O' icon.
- Save/read configurations: Red line pointing to the 'System Config' dropdown.
- After setting, write configuration to H.A.O: Red line pointing to the 'Save' button.
- Function indicators adjustment: Red line pointing to the 'Flash Interval' dropdown.
- Button lights style options: Red line pointing to the 'Button Lights' section.
- Shift lights adjustment: Red line pointing to the 'Shift Lights' section.

4

Shift paddles calibrating



While release the paddles,
click “MIN” to set the minimum point.

While press the paddles,
click “MAX” to set the maximum point.

CONSPIT

WWW.CONSPIT.COM